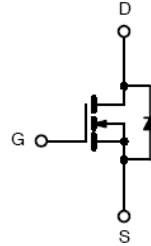


ICE8N70FP N-Channel Enhancement Mode MOSFET

| Product Summary | | | |
|-----------------|------------------------|--------------|-----|
| I_D | $T_A=25^\circ\text{C}$ | 8A | Max |
| $V_{(BR)DSS}$ | $I_D=250\mu\text{A}$ | 700V | Min |
| $r_{DS(on)}$ | $V_{GS}=10\text{V}$ | 0.5 Ω | Typ |

Features

- Low $r_{DS(on)}$
- Ultra Low Gate Charge
- High dV/dt capability
- High Unclamped Inductive Switching (UIS) capability
- High peak current capability
- Increased transconductance performance
- Optimized design for high performance power systems



ICEMOS HAS THE LEADERSHIP PATENT PORTFOLIO FOR SUPERJUNCTION MOSFETS (see page 9). ICEMOS AND ITS SISTER COMPANY 3D SEMI OWN THE FUNDAMENTAL PATENTS FOR SUPERJUNCTION MOSFETS. THE MAJORITY OF THESE PATENTS HAVE 17 to 20 YEARS OF REMAINING LIFE. THIS PORTFOLIO HAS GRANTED PATENTS ISSUED IN USA, CHINA, KOREA, JAPAN, TAIWAN, EUROPE.

**T0220
Full-PAK
Isolated
(T0-220)**

Maximum Ratings and Thermal Characteristics^b ($T_A=25^\circ\text{C}$ unless otherwise noted)

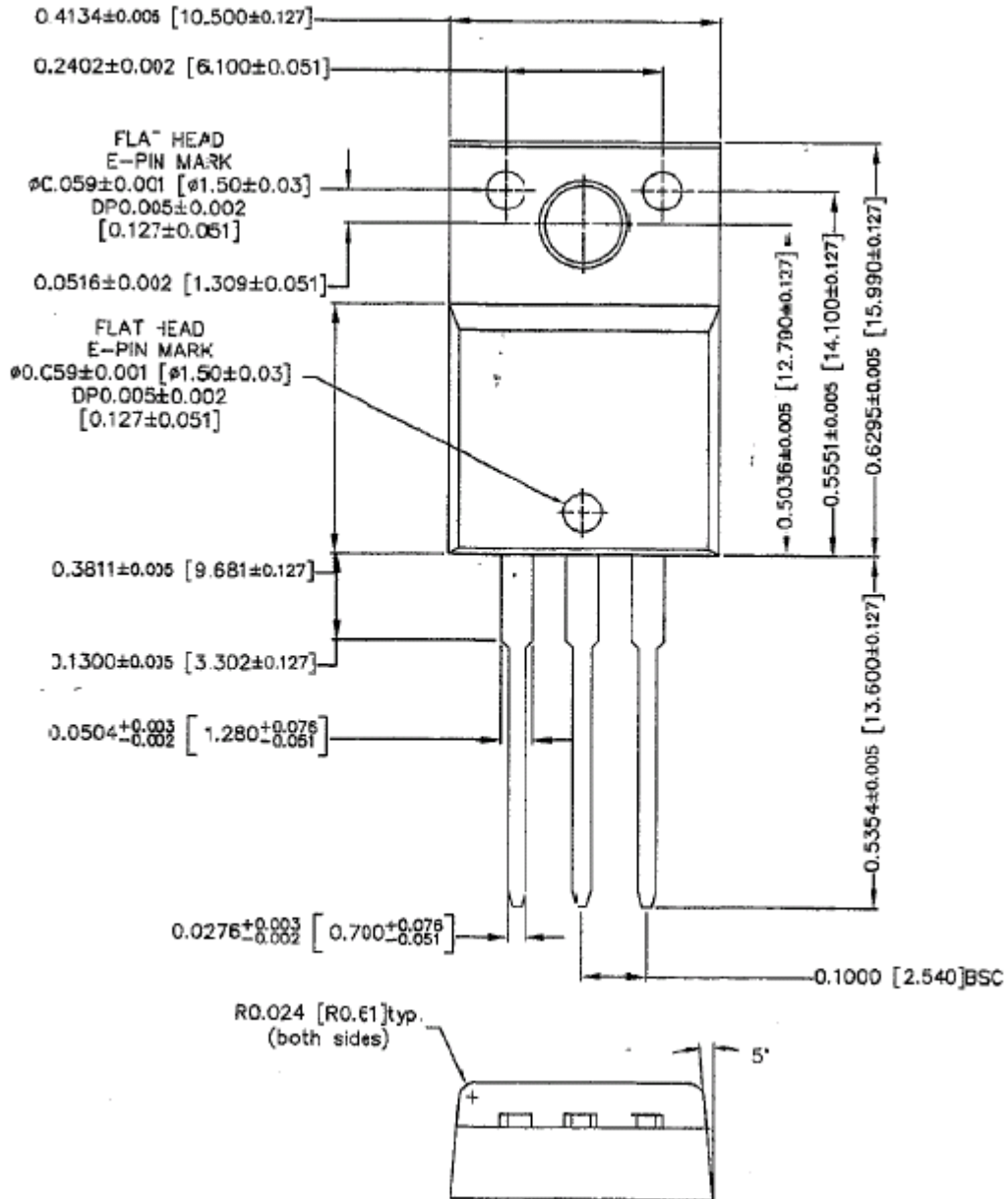
| Parameter | Symbol | Limit | Unit | |
|--|---|------------|------------------|--------------------|
| Drain-Source Voltage | V_{DS} | 700 | V | |
| Gate-Source Voltage (Static) | V_{GS} | ± 20 | | |
| Gate-Source Voltage AC ($f > 1\text{Hz}$) | V_{GS} | ± 30 | | |
| Drain Current | - Continuous ($T_c = 25^\circ\text{C}$) | I_D | 8 | A |
| | - Pulsed (limited by T_{jmax}) | I_{DM} | 25 | |
| Repetitive Avalanche Current (limited by T_{jmax}) | I_{AR} | 4 | A | |
| Energy in Avalanche (single pulse, $I_D = 4\text{A}$) | EAS | 240 | mJ | |
| Maximum Power Dissipation ($T_c = 25^\circ\text{C}$) | P_D | 35 | W | |
| Operating Junction and Storage Temperature Range | T_J, T_{sg} | -55 to 150 | $^\circ\text{C}$ | |
| dV/dt voltage slope ($V_{ds}=480\text{V}, I_D=8\text{A}, T_j = 125^\circ\text{C}$) | dV/dt | 50.0 | V/ns | |
| Thermal Resistance ^a | - Junction-to-Ambient | R_{thJA} | 80 | $^\circ\text{C/W}$ |
| | - Junction-to-Case | R_{thJC} | 3.50 | |

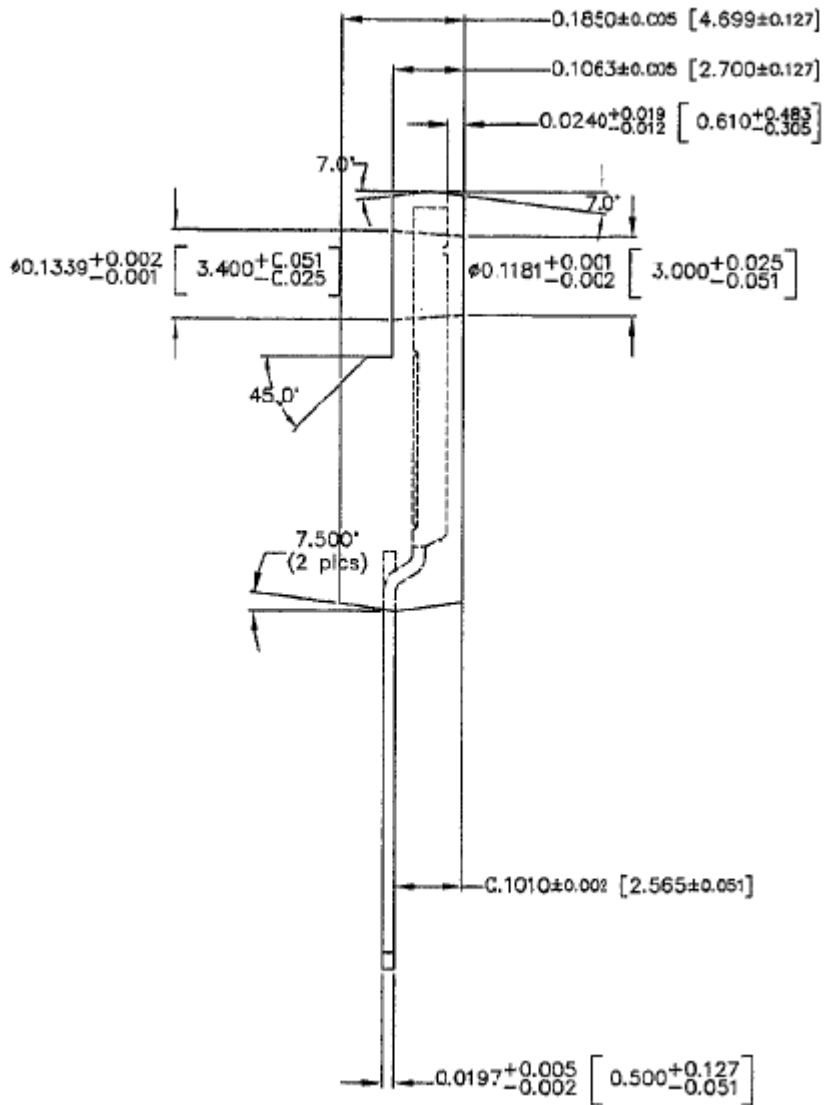
a When mounted on 1 inch square 2oz copper clad FR-4

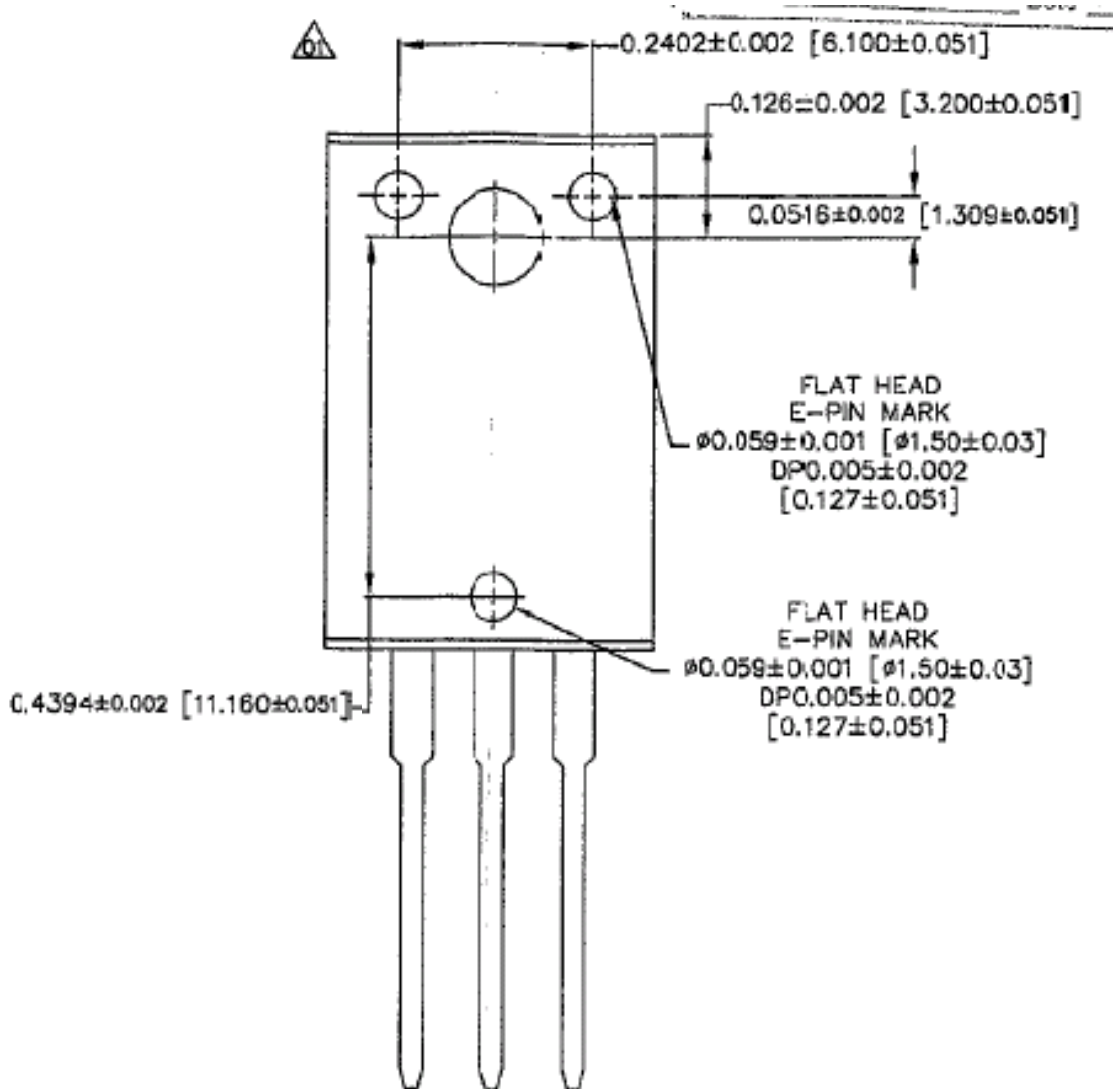
b Preliminary Data Sheet - Specifications subject to change.

Electrical Characteristics^b (T_J=25°C unless otherwise specified)

| Symbol | Parameter | Test Condition | Min | Typ | Max | Units |
|------------------------|---------------------------------------|---|-----|------|------|-------|
| V _{(BR)DSS} | Drain-to-Source Breakdown Voltage | V _{GS} =0V, I _D =250uA | 700 | 730 | | V |
| I _{DSS} | Zero Gate Voltage Drain Current | V _{DS} =700V, V _{GS} =0V T _J = 150°C | | 0.1 | 1 | μA |
| | | | | | 100 | μA |
| I _{GSS} | Gate-Body Leakage | V _{GS} =±20V, V _{DS} =0V | | | 100 | nA |
| V _{GS(th)} | Gate Threshold Voltage | V _{DS} =V _{GS} , I _D =250uA | 2.1 | | 3.9 | V |
| r _{DS(on)} | Drain-to-Source On-State Resistance | V _{GS} =10V, I _D =4A T _J = 150°C | | 0.5 | 0.55 | Ω |
| | | | | | 1.1 | |
| R _G | Gate Resistance | f = 1MHz, | | 0.5 | | Ω |
| g _{fs} | Transconductance | V _{DS} > 2*I _D *R _{DS} , I _D = 4A | | 8 | | S |
| C _{iss} | Input Capacitance | V _{DS} =25V, V _{GS} =0V, f=1MHz | | 1200 | | pF |
| C _{oss} | Output Capacitance | | | 400 | | pF |
| C _{rss} | Reverse Transfer Capacitance | | | 24 | | pF |
| t _{d(on)} | Turn-On Delay Time | V _{GS} =10V, I _D =8A, V _{DS} =380V R _G = 4Ω (External) | | 10 | | nS |
| t _r | Rise Time | | | 5 | | nS |
| t _{d(off)} | Turn-Off Delay Time | | | 67 | 100 | nS |
| t _f | Fall Time | | | 4.5 | 12 | nS |
| Q _g | Total Gate Charge | V _{GS} =10V, I _D =8A, V _{DS} =480V | | 44 | | nC |
| Q _{gs} | Gate-to-Source Charge | | | 3 | | nC |
| Q _{gd} | Gate-to-Drain Charge | | | 7 | | nC |
| V _(plateau) | Gate Plateau voltage | | | 5.5 | | V |
| t _{rr} | Source-to-Drain Reverse Recovery Time | I _S =I _F , di/dt=100A/uS, V _{rr} =480V | | 200 | | nS |
| Q _{rr} | Reverse recovery charge | | | 11 | | μC |
| I _{rm} | Peak reverse recovery current | | | 70 | | A |
| V _{SD} | Diode Forward Voltage | I _S =I _F , V _{GS} =0V | | 1.0 | 1.2 | V |







ICEMOS SUPERJUNCTION PATENT PORTFOLIO

ICEMOS GRANTED PATENTS

US7,429,772
US7,439,178
US7,446,018
US7,579,607
US7,723,172
US7,795,045
US7,846,821
US7,944,018
US8,012,806
US8,030,133

3D SEMI PATENTS LICENSED TO ICEMOS

US7,041,560B2
US7,023,069B2
US7,364,994
US7,227,197B2
US7,304,944B2
US7,052,982B2
US7,339,252
US7,410,891
US7,439,583
US7,227,197B2
US6,635,906
US6,936,867
US7,015,104
US9,109,110
US7,271,067
US7,354,818
US7,052,982,
US7,199,006B2

Note: additional patents in China, Korea, Japan, Taiwan, Europe have also been granted to IceMOS and 3D Semi for Superjunction MOSFETs with 70 additional Patent applications in process in the USA and the above listed countries.